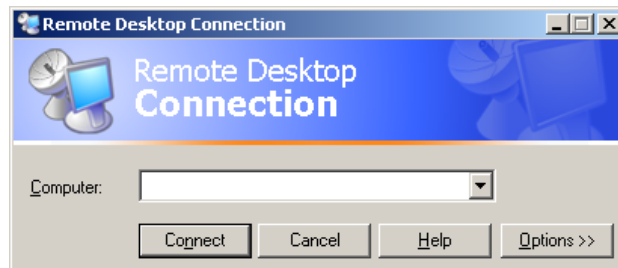


Distance Learning SQL Classes

Instructors and users for SQL classes may have access to a SQL server through terminal services. To access the terminal server you must have an RDP app like Remote Desktop.

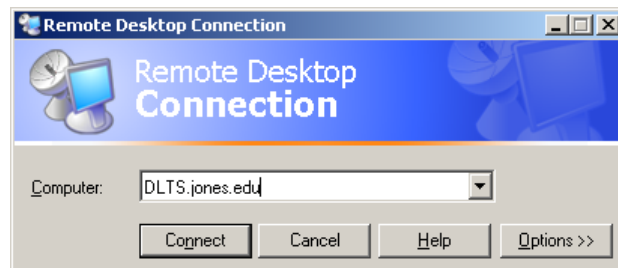
Step 1:

Start Remote Desktop by going to the start menu and clicking on run. Type in mstsc and click OK.



Step 2:

Enter the following server address – DLTS.jones.edu – and click **Connect**

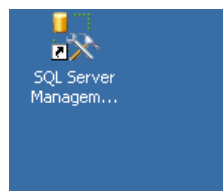


Step 3:

You will be given a Windows Login screen. Enter the user name and password given by your instructor. You will have to change the password on your initial login.

Step 4:

To manage a MSSQL database, click on the SQL Server Management Studio icon



Step 5:

You will then be prompted to login.



Step 6:

Enter the following settings –

Server type – Database Engine

Server name – DLSQL

Authentication –SQL Server Authentication

Username/Password – given to you by your instructor

DO NOT check Remember password



You are now logged in to have access to the databases on DLSQL.